



# Omnia

Digital Farming



Real time stock  
and inventory



Multiple users at  
no additional cost



British system for  
British farmers



Maximise time  
and efficiency



All information  
in one place



Capture knowledge  
on the go

➤ **Translating  
data into  
knowledge**





# Contents

Translating Data Into Knowledge	4
Omnia Packages	6
Map Layers	8
Connectivity	10
Climate Insight	12
Nutrient & Manure Management	14
Field Diary	16
Omnia Scout	18
Satellite Imagery	20
Stock Management	22
Spray Plans	24
HALO Auditing Database	25
Targeted Nutrition	26
Targeted Seed Rates	28
Financial Performance	30
TerraMap	32
Hardware Solutions	34

➤ We have complete control of our data, the ability to plan and then fine tune prescriptions before they are issued is a must in our climate, Omnia delivers that and more.

Andrew Booth, Savock Farms, Aberdeenshire





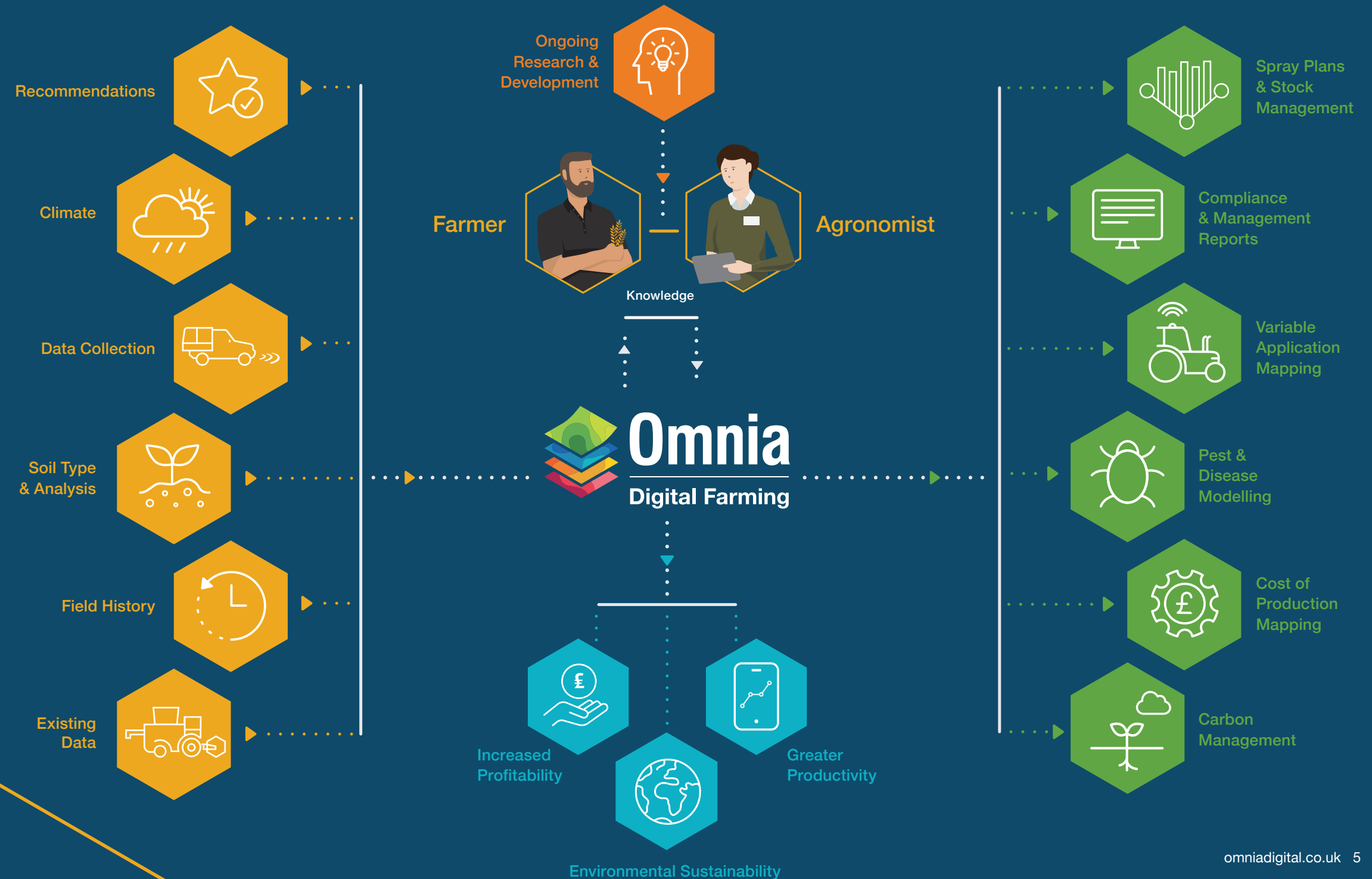
# Translating Data Into Knowledge

**Developed with the farmer and agronomist partnership in mind.**

Omnia is a revolutionary digital farm management and recommendation system that analyses information from a variety of sources, for better informed decisions. With all your information in one place, Omnia will save you time.

We take data security very seriously and hold both ISO 27001 'Information Security Management' and Farm Data Principles certifications.




Visit our website for more information.



# Omnia Packages

Each service is tailored to your needs and can be delivered by a specialist.

Omnia Access is a free entry point to Omnia. The Field and Business Manager packages are priced according to farm size and requirement.

	Omnia Access 	Omnia Field Manager 	Omnia Business Manager 
Fields Module	✓	✓	✓
Map Layers Module	✓	✓	✓
Data Imports	✓	✓	✓
Reports Module	✓	✓	✓
Climate Module	✓	✓	✓
Scout App	✓	✓	✓
Satellite Imagery		✓	✓
Pest & Disease Modelling		✓	✓
Nutrition Plans & NVZ Compliance		✓	✓
Seed Plans		✓	✓
Field Diary with Task Management	✓*	✓	✓
Stock Management		✓	✓
Spray Plans		✓	✓
HALO Crop Protection Audit			✓
Variable Rate Prescription Plans			✓
Field Performance Mapping			✓
Production Cost & Gross Margin Analysis			✓

\*Extra functionality available for Hutchinsons Group agronomy clients

› We have been impressed with Omnia, as we have been able to make changes to what we are doing in a quick, efficient manner and we have not had to make a huge investment to do this.

Nick Wilson,  
Hundayfeld Farm, Yorks







Never lose paper maps again, with the ability to load them into Omnia or manually draw them into Omnia's market leading 'Map Layers' function.



Omnia Access

## Map Layers

**Capture your thoughts and knowledge in one place**

Map layer transparency and filters allow you to see what you need - all of which can be used to create reports.

- › Weed and slug pressure
- › Drainage
- › Pictures
- › Environmental features
- › Trial areas
- › Drone imagery
- › Tracks and field access points
- › Buffer zones
- › Irrigation equipment
- › Special points of interest





Omnia Access

## Connectivity

Omnia can hold all your information in one system. There is no need to input data multiple times when connecting to machinery, so you can operate with maximum efficiency.

Omnia supports all common format standards from across the industry to ensure data transfer is quick and easy.

- › Import/Export common file formats
  - › Seamless links with third party apps
  - › Wireless data transfer
  - › Smartphone/Tablet applications
- 
- › Omnia has made it super easy for us to import and export data with multiple platforms and brands. We are yet to find something Omnia doesn't work with.

Roy Fisher,  
Airdrie Farming, Fife

Some features not available with Omnia Access





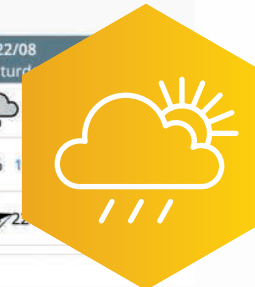
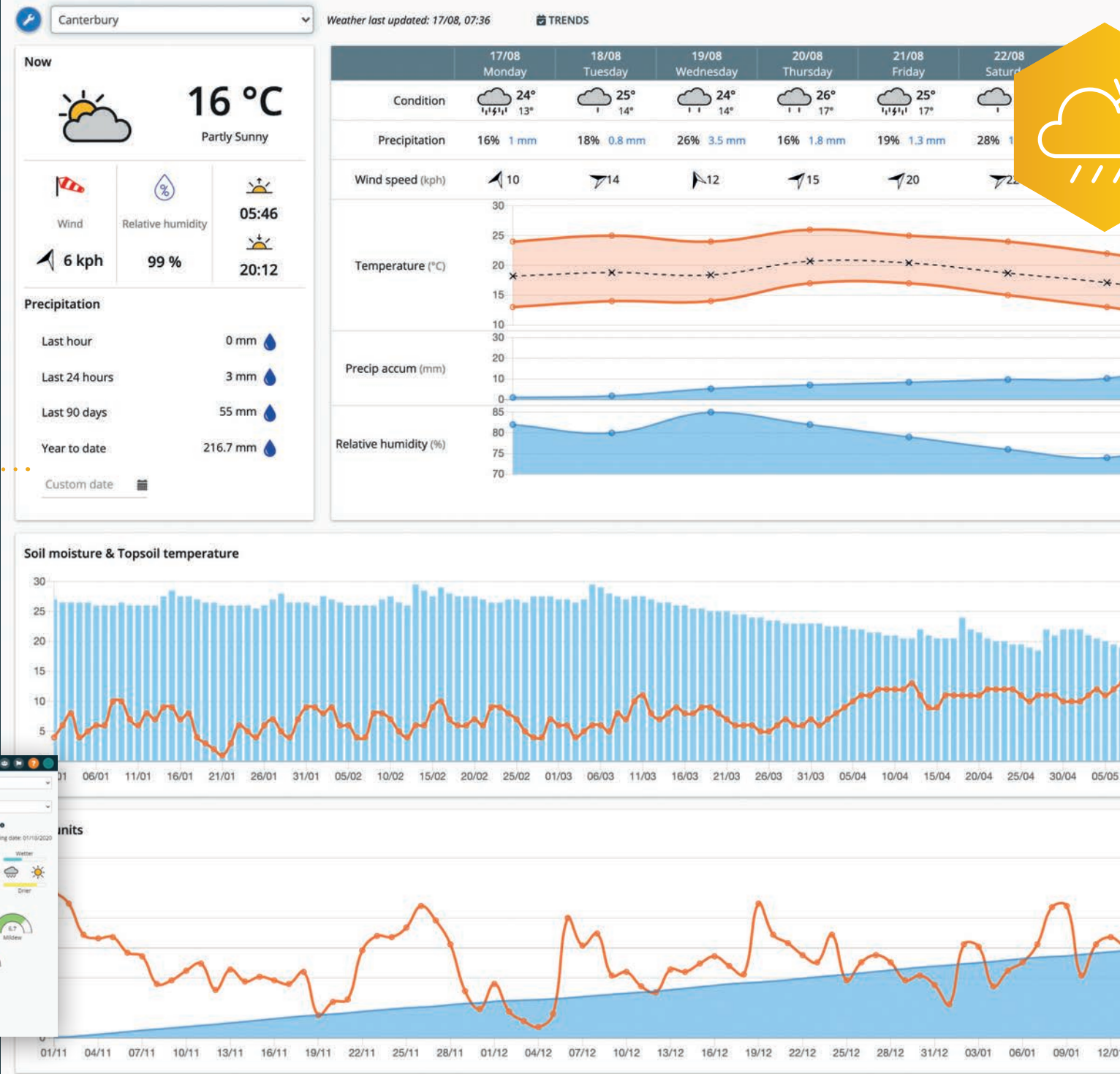
Omnia Access

# Climate Insight

Specific to your situation

- › Long term weather trends
- › Historic weather data
- › Soil temperature and moisture charts
- › Crop growth stage modelling
- › Pest and disease forecasting – optional email alerts
- › Wind speed and solar hours

Some features not available with Omnia Access

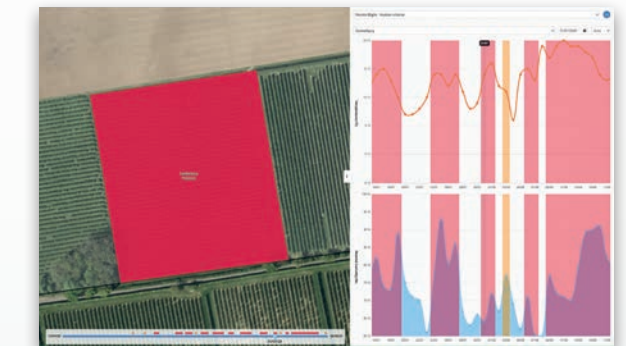


## An Innovative Solution

Get weather forecasts accurate to 1km<sup>2</sup> of a virtual weather station for a 10 day period.

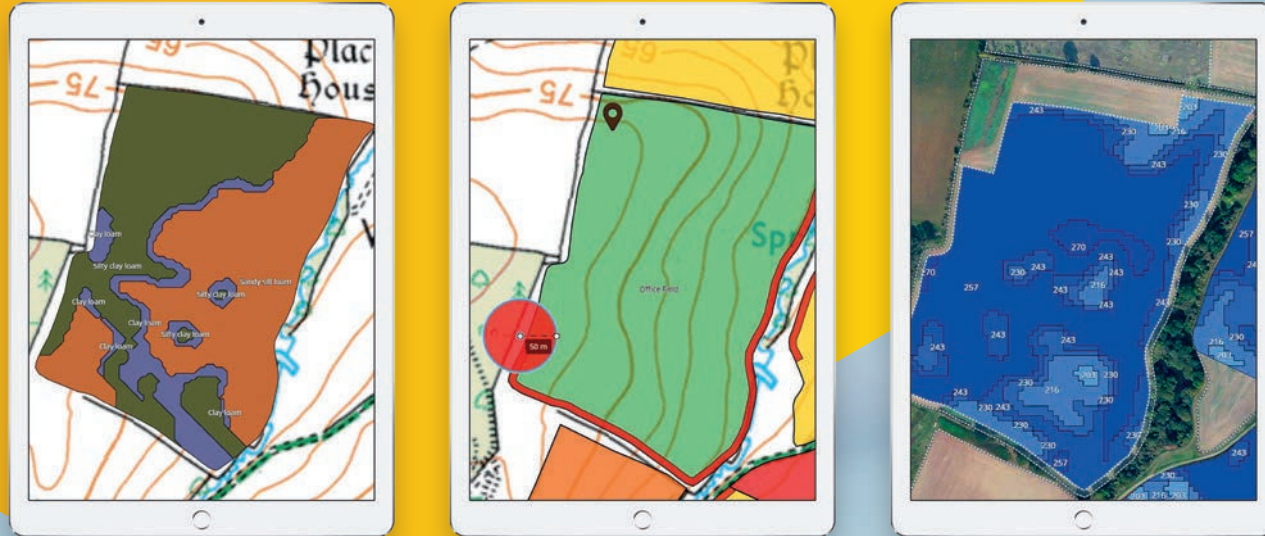
Several stations can be placed on the holding, and fields can be associated with individual stations.

You can also view historic data which makes record keeping and treatment justification much easier.





## Accurate management of manure and fertiliser



➤ It all comes down to the same requirement; using manures to maximum benefit, saving money where fertiliser is not needed, reducing harmful impact on the environment, whilst complying with NVZ rules.

Michael Howie,  
Morwick Dairy, Northumberland



Omnia Field Manager

# Nutrient & Manure Management

Meeting Rules for Water and easing burden of NVZ regulations

## Maximising Nutrient Use Efficiency

Omnia delivers unrivalled whole field nutrition planning to help manage optimum uptake. Calculations are fully justified to meet specific farm needs, including Nitrogen breakeven ratio.

Regular soil sampling can be included for P, K, Mg and S. Other essential soil attributes can be measured including:

- pH
- Organic Matter
- Cation Exchange Capacity
- Micronutrients

## Manure Management Planning

Manure and slurry should be treated as a valuable resource of nutrients and organic matter.

An Omnia manure management plan is split into five specific sections:

1. Risk Map
2. Farm Limit
3. Field Limit
4. Storage
5. Imports and Exports

Use your manures to maximum benefit and reduce harmful impact on the environment.





Omnia Field Manager

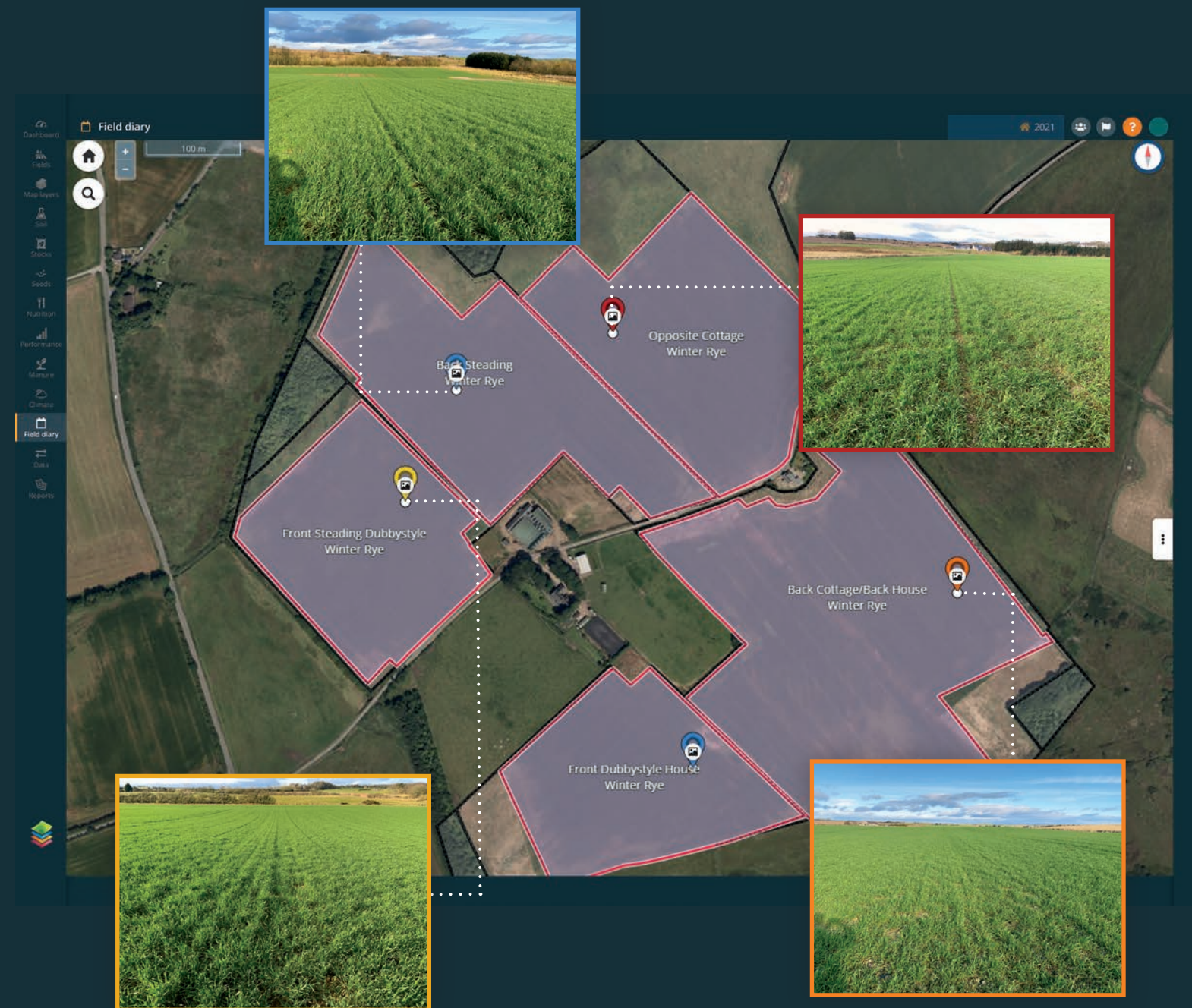
# Field Diary

**Field Diary allows you to plan tasks and record operations and field inspections throughout the season.**

With paperless records, you can be more productive planning farm operations and save time when creating compliance reports.

## Task Manager

- › Create and plan tasks for any operation across the farm, from drilling and spreading to spraying and combining
- › Assign tasks to operators
- › Seed, nutrition, or spray plans can be included in tasks
- › View tasks by calendar, crop, field group, plan type and status



## Tasks

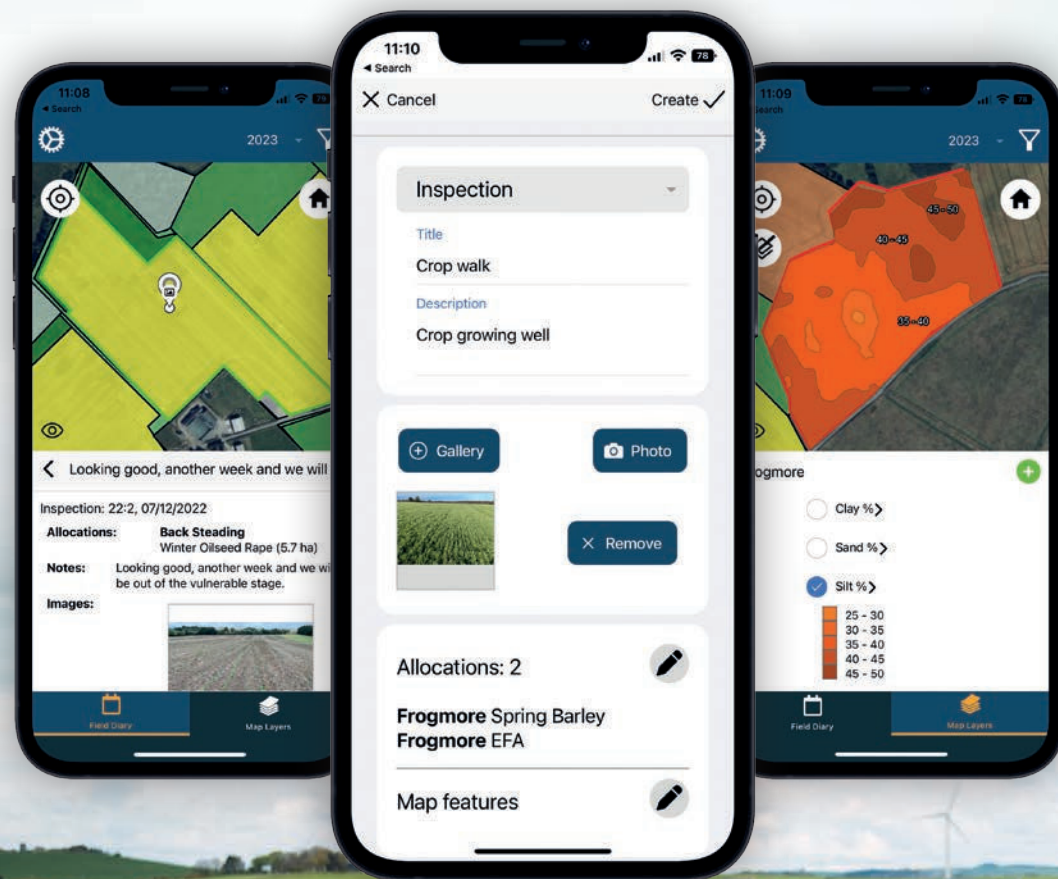
- › Farm operators can view and complete tasks assigned to them
- › Manage activity for paperless record keeping

## Records

- › View/Record inspections and operations
- › Confirm application of plans
- › Store and view crop pictures
- › Create reports of diary entries
- › Enhance traceability and justifications
- › Interactive tank mix tool

Use the Scout app to record activity and complete tasks on-the-go.





› The Omnia Scout app has been really useful to get my clients to record fertiliser and manure applications quickly and easily – this helps me with crop nutrition requirements and also keeps them compliant with legislation.

Jim Clark, Agronomist, Cumbria



Omnia Field Manager

## Omnia Scout

**The Omnia Scout app allows you to view and record activity on the go, so you can keep up to date with what is happening in the field.**

It is intuitive to use and extends your use of Omnia, wherever you are.

- › View/Add/Edit layers
- › Add field inspections
- › Add field operations
- › Farm operators can complete tasks on their phone or tablet using the 'Tasks' tool
- › Interactive tank mix tool

Data captured on the Omnia Scout app flows seamlessly into Field Diary.





Omnia Field Manager

## Satellite Imagery

Whether you are looking to monitor crop development and health over the season, create variable Nitrogen plans, or scout fields; Omnia satellite imagery has you covered.

View available Sentinel 2 data and choose which images to save as layers against your crops.

- › RGB True Colour
- › NDVI
- › Chlorophyll Index





Omnia Field Manager

# Stock Management

Manage stock levels in real time across multiple sites.

- › Keep an accurate record of stocks in your stores
- › Inventories can be edited by multiple users
- › Produce stock records as required
- › Interactive stock tables to find out information about stock items
- › Get an alert when pesticides are approaching their legal end of use date
- › Keep track of stock financial costs and values







Omnia Field Manager

## Spray Plans

Create and manage your spray plans in Omnia. Whether you make your own spray plans or use an agronomist, we have created a range of unique tools to make the process easy and efficient.

- › Automatic tank mix sequence
- › Intuitive interface
- › Map based field selection
- › Tools for part field and headland options
- › Easy split plan function
- › Product approval information



Omnia Business Manager

## HALO Auditing Database

### Pesticide audit reassurance with our HALO system.

Audited spray plans with our bespoke HALO crop protection database available through Omnia Business Manager.

- › Uses industry standard regulatory data
- › Checked and enhanced daily by our in-house experts
- › 15 comprehensive checks to ensure spray plans are compliant with crop protection legislation



#### Connected

Save time with your data in one place



#### Compliance

Industry regulatory data



#### Reassurance

Checked by experts daily





**Omnia Business Manager**

# Targeted Nutrition

**Supplying crop demand accurately and cost effectively.**

Omnia offers effective solutions to managing variable fertiliser applications.

- › Optimise fertiliser use for yield and quality
- › Increase applications to low or high biomass areas
- › Vary liquid or solid fertiliser applications
- › Use satellite imagery data
- › Compliance with Rules for Water
- › Nmax calculation

› We used to blanket treat everything, but now fertiliser is only applied where it's needed.

Daniel White,  
Bottisham, Cambs



## Target nutrients where they are needed most

Compare historic and recent analysis to determine the actual crop demand accurately and cost-effectively.

Soil sampling results can also be uploaded into the software.





Omnia Business Manager

## Targeted Seed Rates

Variation in crop establishment within a field can be considerable.

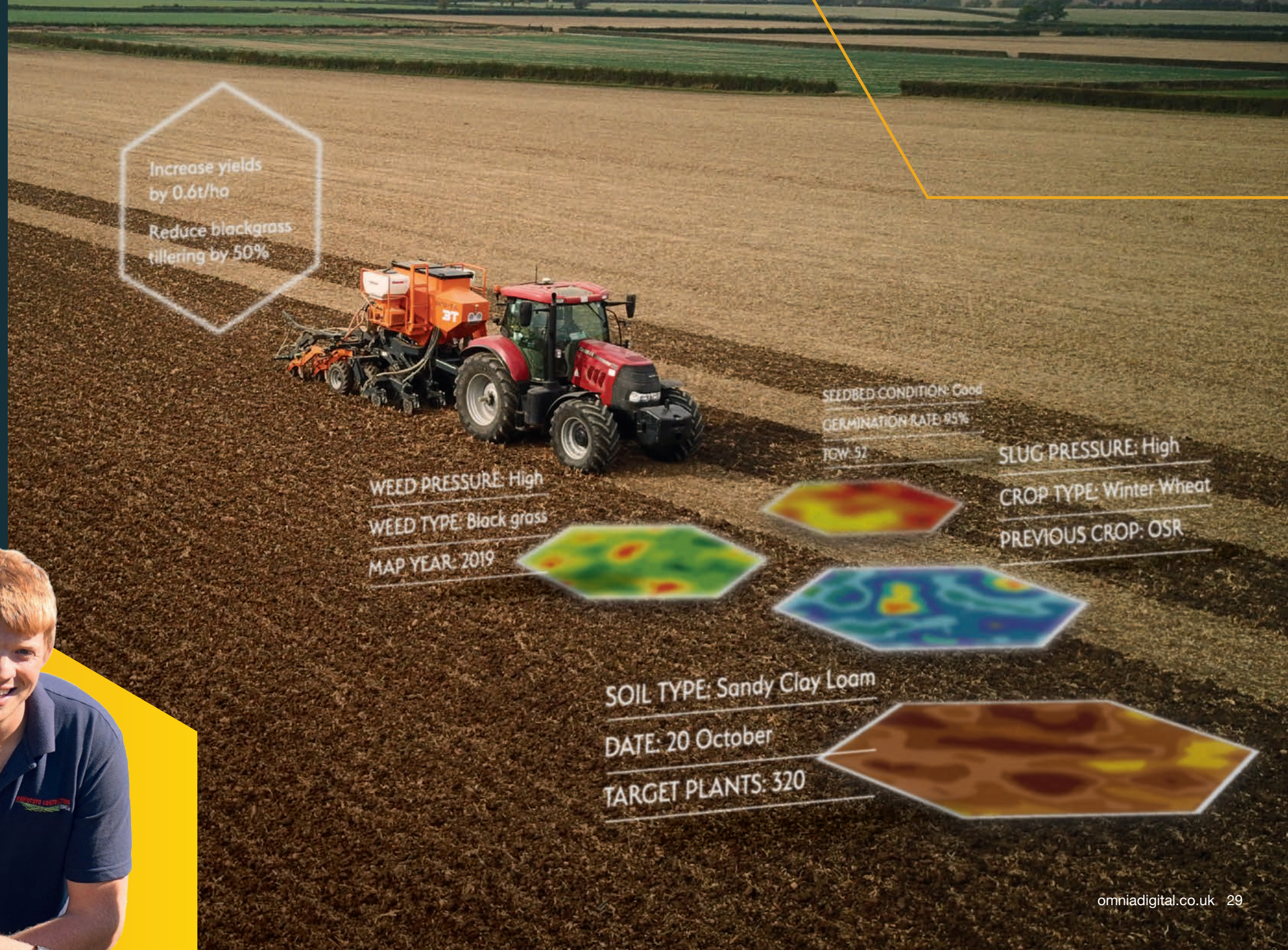
Using the crop type, variety and anticipated drilling date Omnia suggests a target plant population, which you can modify to meet your individual situation.

Maps of soil types and additional factors such as seedbed condition, weed or slug pressure, can then be overlaid.

A seed rate map that matches the agronomic requirement of the field more closely than ever before.

Without a uniform plant stand you are always playing 'catch up' and have already lost potential.

Chris Wade,  
Graham Wade Farms, Lincs



Increase yields  
by 0.6t/ha  
Reduce blackgrass  
tillering by 50%

WEED PRESSURE: High  
WEED TYPE: Black grass  
MAP YEAR: 2019

SEEDBED CONDITION: Good  
GERMINATION RATE: 95%  
TGW: 52

SLUG PRESSURE: High  
CROP TYPE: Winter Wheat  
PREVIOUS CROP: OSR

SOIL TYPE: Sandy Clay Loam  
DATE: 20 October  
TARGET PLANTS: 320





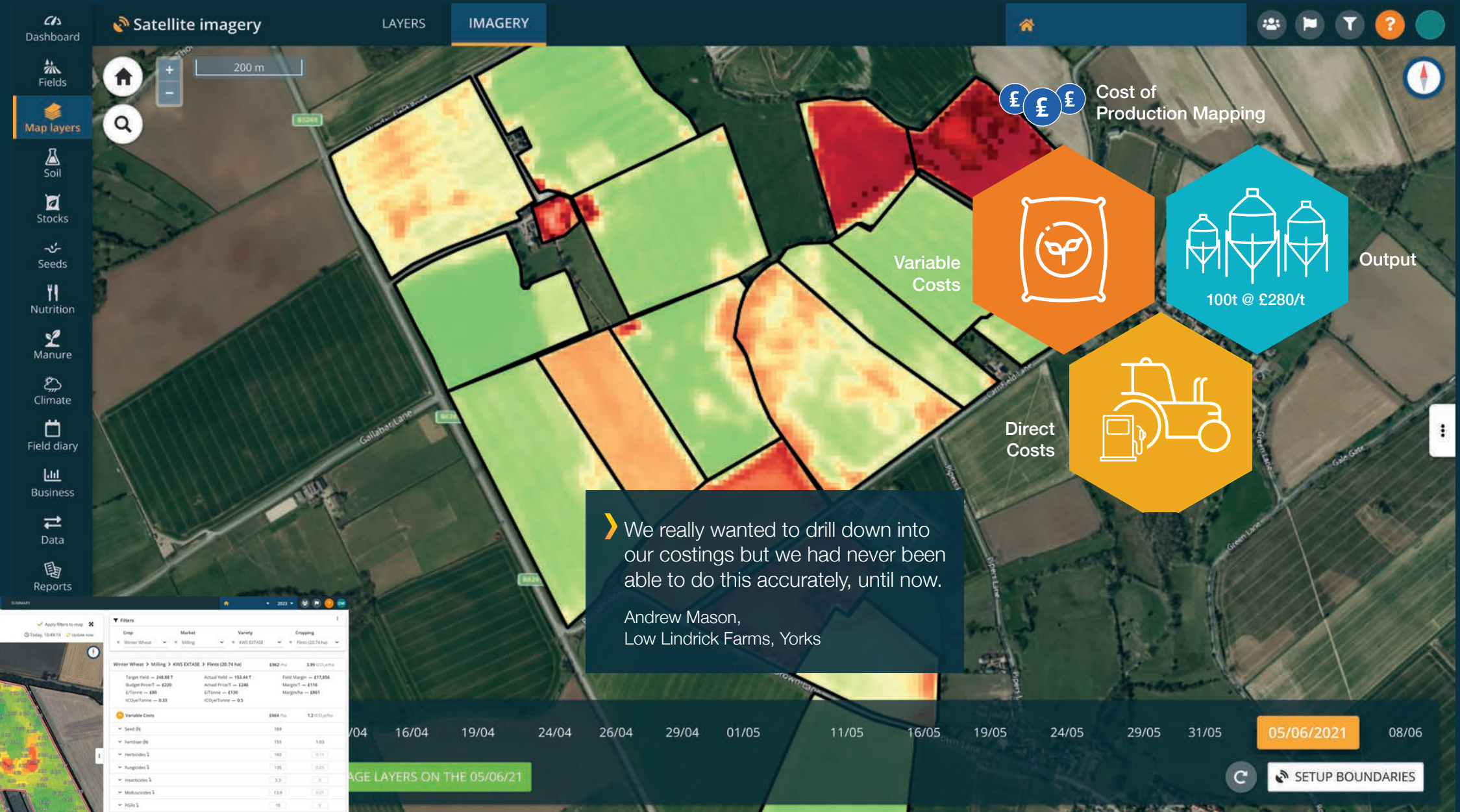
Omnia Business Manager

# Financial Performance

Providing the tools to assess in field profitability and gross margins.

Explore the financial performance of a field, taking account of variable application of inputs and yield maps, to give a greater level of understanding than ever before.

The business planning tools allow you to focus on the areas where you can make the biggest difference, assess alternative cropping and mitigate risk.







### Soil Samples Taken and Data Processed

Data is collected by scanning and taking reference soil samples.

The raw scan, soil data and soil samples are combined and processed to produce high-definition soil property layers.



### Measures Four Naturally Emitted Isotopes

The TerraMap system uses passive gamma-ray detection technology to map all common nutrient and physical soil properties.

The scanner, which is manufactured by SoilOptix® Technology, measures Caesium, Uranium, Potassium and Thorium.



### 800 Reference Points Per Hectare

TerraMap produces the highest resolution soil mapping layers at over 800 data reference points per hectare.

In comparison, grid sampling map layers have only a single data point per hectare.

› TerraMap offers a big jump in accuracy.

Charles Parkinson,  
Manor Farm, Lincs

# TerraMap

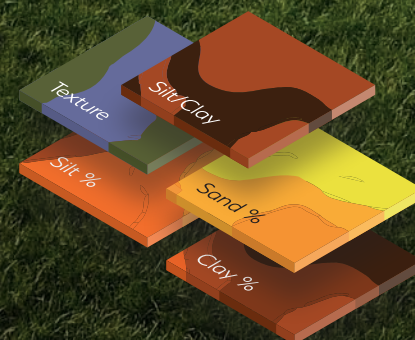
**TerraMap is a soil service that enables better informed decisions for crop management and soil stewardship.**

- › Measures and maps common nutrient properties
- › Defines soil textural changes within the field
- › Provides more data points, greater definition and more detailed soil maps than any other system in the world
- › Use data to produce variable rate application for seed and crop nutrition
- › Tailored to the specific soil conditions with unprecedented accuracy
- › The TerraMap Gold service measures soil's 'plant available' and 'non-readily available' nutrients, allowing greater understanding of soil dynamics

#### Standard Properties



#### Soil Texture



#### Other Properties



#### Additional Elements



SoilOptix® is the registered trademark of SoilOptix Inc. and is used under license.



# Hardware Solutions

## iPad Variable Rate Solutions – Streamline your precision farming operations.

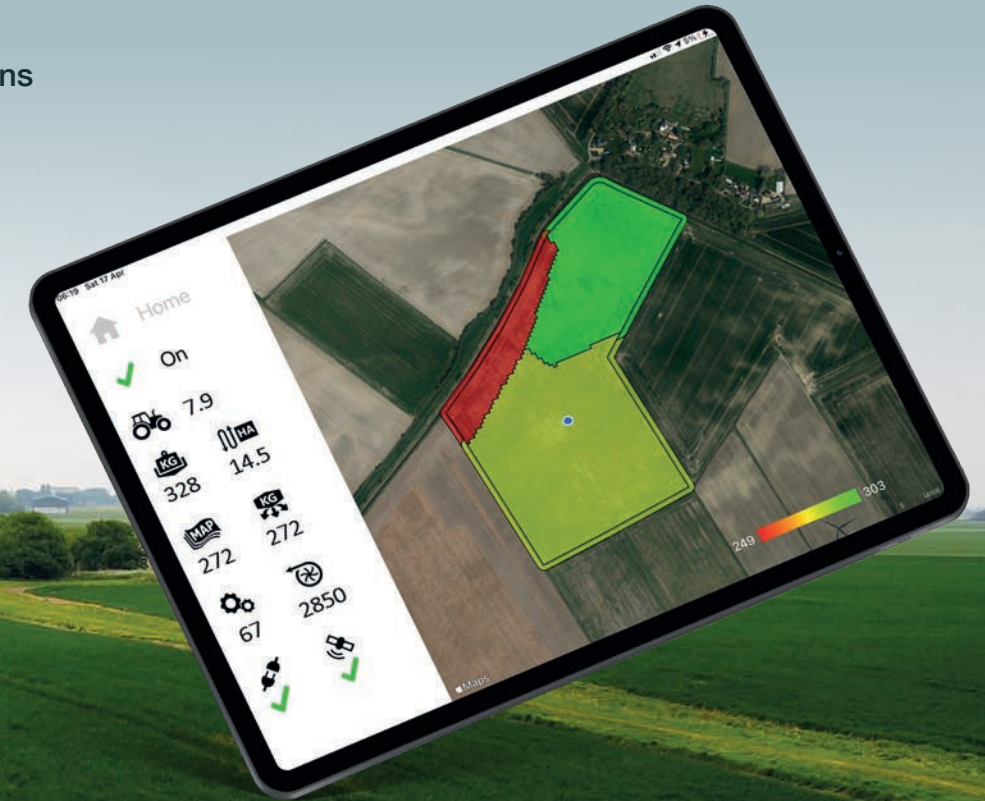
Connect and E-Seed are low cost solutions that have been designed to simplify precision farming. The iPad apps allow you to seamlessly and instantly send variable application maps created in Omnia to the field, and control the machines as well.

- › Cost effective
- › Intuitive
- › Greater control
- › Wireless data transfer
- › Improves efficiency
- › Wide range of compatibility

Visit the Omnia website for a full list of compatible machines.

## › iPad Variable Rate Solutions

Streamline your precision farming operations



### Omnia Connect

Easily connect your drill, spreader, or sprayer to an iPad for variable rate applications. A low cost solution to enable variable rates where you do not have GPS rate control technologies.

### Omnia E-Seed

Upgrade any mechanical drive drill with the E-Seed conversion kit. Variable rate drilling is now possible with the land wheel replacement electric drill module.





For more information about any  
of our Omnia services contact:

T: 01780 919010

E: [info@omniadigital.co.uk](mailto:info@omniadigital.co.uk)



✕ OmniaUK  
[omniadigital.co.uk](http://omniadigital.co.uk)

MB24

**HUTCHINSONS**  
Crop Production Specialists